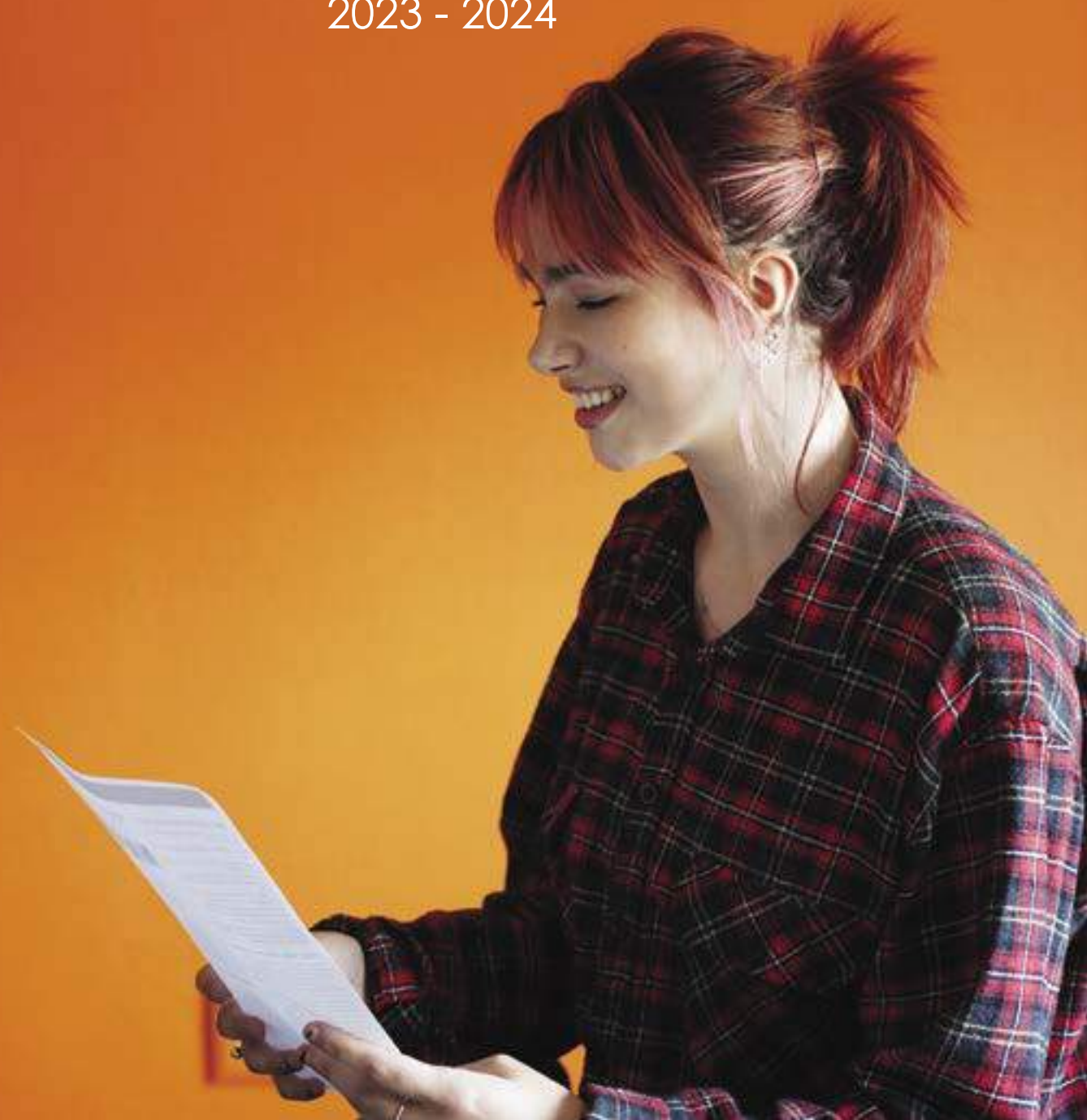


NCUK
THE UNIVERSITY CONSORTIUM


malvern
UNIVERSITY PARTNERSHIPS

NCUK FOUNDATION PROGRAMMES

2023 - 2024





My name is Rania, and I am the Academic Manager for the NCUK programmes here at Malvern House London.

Our centre is conveniently located in the heart of our capital city, with exceptional transport links within London and to the rest of the UK. Along with the excellent academic and student support we offer, our students experience the true diversity and multiculturalism London offers.

Our NCUK qualifications are recognised worldwide and we guarantee progression to one of our partner universities, including many Russell Group Universities. Our programmes prepare students to hit the ground running, with a high level of teaching hours, and one to one guidance from our dedicated Student Support team and student counsellors, together with the opportunity to visit your chosen universities during your studies with us. We are here every step of the way to make sure our students progress to the university of their dreams.

We pride ourselves on offering international students access to a full British educational experience. Quality is at the heart of everything we do. Our International Foundation Year not only gives students the highest academic education, but also specialist English language, study skills and cultural skills that will help you progress smoothly and be successful both during your Foundation Programme and at the university you progress to.

Rania

Rania Yosri, Academic Manager NCUK



Malvern House London International Study Centre

NCUK are unique in UK higher education. They are a consortium of leading universities dedicated to giving international students **guaranteed** access to universities and helping you succeed when you get there.

NCUK qualifications have been recognised by 45+ leading universities worldwide including many in The Russell Group.

Why NCUK?

NCUK recruits students from over **100 NATIONALITIES** every year

99% VISA SUCCESS RATE FOR NCUK STUDENTS

90% OF NCUK STUDENTS GET INTO THEIR FIRST CHOICE UNIVERSITY

80% OF NCUK STUDENTS ACHIEVE A FIRST OR SECOND CLASS DEGREE AT UNIVERSITY

Your classes will take place within the International Study Centre at Malvern House London:

- 🛡️ Close links with NCUK universities
- 🛡️ Small, supportive class sizes
- 🛡️ Wide range of student support services
- 🛡️ Classes take place in the heart of London
- 🛡️ CAS for pathway for International Foundation with follow-on visa offered by university can be applied for in the UK

Study the International Foundation Year Programme and gain **guaranteed*** access to an NCUK University with UK progression options including the following:



Global NCUK University Progression Universities outside the UK:



*Guaranteed progression to a degree programme at an NCUK University for all students who successfully complete the qualification.





Accommodation

Where you live is important. For this reason, we help our students find accommodation that best meets their needs. We have good options for students to suit a range of budgets with an easy commute to the Centre.



Chapters Kings Cross

 2 mins

Same building as Malvern House London

Premium studio accommodation with on-site gym, very high end communal areas.



AXO Islington (Zone 2)

 24 mins

556 Holloway Road
London N7 6JP

En-suite rooms with a shared kitchen. Cluster flats of 7 or 8 rooms, bike storage, CCTV security and laundry service.



Craft Building (Zone 1)

 24 mins

12 Greatorex Street
London E1 5NF

Single bed, en-suite bathroom with shared kitchen/ lounge. Free broadband and Wi-Fi throughout, on-site laundry and bike storage.



Don Gratton House (Zone 1)

 28 mins

82 Old Montague Street
London E1 5NN

Double bed and en-suite with plenty of storage, free broadband and Wi-Fi throughout, common room, on-site laundry, on-site security and CCTV and roof terrace.



Homestay (Zone 2-4)

- Single en-suite
- Half board
- Under 18 accommodation

This is a sample of accommodation options available to students. Bookings are subject to availability – please contact your Educational Counsellor for pricing.

International Foundation Year in Business

Whether you aim to study Business Management, Economics or Accounting and Finance, you can choose the stream to best suit your progression degree aspirations.

For aspiring entrepreneurs and future business owners, the Business International Foundation Year is the choice for you. In the course you will study, Economics, Business Studies, English for Academic Purposes and Maths or Global Studies. The course will provide you with the academic knowledge and skills needed to pursue global career opportunities, a broad understanding of business, as well as specific starter skills (such as marketing and finance) that you need when progressing onto university.

Business & Management

24 hours tuition per week

Modules:

English for Academic Purposes
Business
Economics

Option between:

Global Studies or
Mathematics for Business

Accounting & Finance

24 hours tuition per week

Modules:

English for Academic Purposes
Business
Economics
Mathematics for Business

Humanities & Social Sciences

24 hours tuition per week

Modules:

English for Academic Purposes
Business
Sociology
Global Studies

KEY INFO

Start Date: September 2023
January 2024

Tuition Fees: £16,750

Minimum English language level: UKVI IELTS 5.0 with no subtest below 5.0.

Academic Entry Requirements: Vary depending on where you studied.

Minimum Age Requirement: 16 years of age.
Students must turn 17 September intake: by December 31 of the year of course commencement.

Minimum Age Requirement: 17 years of age.
January intake:

Scholarships Available

Contact your Educational Counsellor for more details.



Sample Timetable	Monday	Tuesday	Wednesday	Thursday	Friday
Period 1	Business	Math / Global Studies	EAP	Math / Global Studies	Economics
Period 2	Business	Math / Global Studies	EAP	Math / Global Studies	Economics
Period 3	Math / Global Studies	Business	EAP	Economics	Math / Global Studies
Period 4	EAP	Business	Economics	Economics	Business
Period 5	EAP	EAP	Economics	EAP	EAP
Period 6	Study Skills	Study Skills	Study Skills	Study Skills	EAP

International Foundation Year in Science

The Science International Foundation Year is perfect for students who want to acquire the skills needed to take on a science related degree at university.

At Malvern House London, you will be studying Biology, Chemistry, Mathematics and English for Academic purposes to help prepare you for first year entry to undergraduate degrees courses. This course is not only theoretical learning, as you will also have the chance to participate in practical laboratories throughout the year with us, to truly give you the first-hand experience of studying in a scientific field.

As part of this programme you will take the following modules:

English for Academic Purposes

Mathematics

Biology

Chemistry

Progression options:

With a Science International Foundation Year, your progression options are endless. Here are a few popular courses that you can access by taking the Science IFY with Malvern House:

Actuarial Science

Artificial Intelligence and Data Science

Biomedical Science

Astronomy and Space Science

Forensic Science

Medicine

Dentistry

Veterinary Bioscience

KEY INFO

Start Date: September 2023
January 2024

Tuition Fees: £17,800

Minimum English language level: UKVI IELTS 5.0 with no subtest below 5.0.

Academic Entry Requirements: Vary depending on where you studied.

Minimum Age Requirement: 16 years of age. Students must turn 17 September intake: by December 31 of the year of course commencement.

Minimum Age Requirement: 17 years of age. January intake:

Scholarships Available

Contact your Educational Counsellor for more details.



Sample Timetable	Monday	Tuesday	Wednesday	Thursday	Friday
Period 1	Maths	Biology	Maths	Chemistry	Chemistry
Period 2	Maths	Biology	Maths	Chemistry	Chemistry
Period 3	Biology	Chemistry	Biology	Maths	Chemistry
Period 4	Biology	EAP	Biology	Maths	Laboratories
Period 5	EAP	EAP	EAP	EAP	Laboratories
Period 6	EAP	EAP	EAP	EAP	Laboratories
Period 7	EAP	Study Skills	Study Skills	Study Skills	Laboratories

International Foundation Year in Engineering

The Engineering International Foundation Year is perfect for students who would like to learn skills needed from the very beginning that apply directly to future professions.

In our programme you can expect a mixture of theoretical and practical work, as well as a variety of teaching methods designed to give you skills you need for an engineering degree at university.

As part of this programme you will take the following modules:

English for Academic Purposes

Mathematics

Physics

Chemistry

Progression options:

The Engineering International Foundation Year gives you access to multiple degrees at our universities.

Here are a few popular courses that our students can progress to:

Aerospace Engineering

Architecture

Civil Engineering

Computer Science

Chemical Engineering

Electrical Engineering

Mechanical Engineering

Cyber Security

Sustainable Energy Engineering

KEY INFO

Start Date: September 2023
January 2024

Tuition Fees: £17,800

Minimum English language level: UKVI IELTS 5.0 with no subtest below 5.0.

Academic Entry Requirements: Vary depending on where you studied.

Minimum Age Requirement: 16 years of age.
September intake: Students must turn 17 by December 31 of the year of course commencement.

Minimum Age Requirement: 17 years of age.
January intake:

Scholarships Available

Contact your Educational Counsellor for more details.

Sample Timetable	Monday	Tuesday	Wednesday	Thursday	Friday
Period 1	Physics	Maths	Physics	Chemistry	Chemistry
Period 2	Physics	Maths	Physics	Chemistry	Chemistry
Period 3	Maths	Chemistry	Maths	Physics	Chemistry
Period 4	Maths	EAP	Maths	Physics	Laboratories
Period 5	EAP	EAP	EAP	EAP	Laboratories
Period 6	EAP	EAP	EAP	EAP	Laboratories
Period 7	EAP	Study Skills	Study Skills	Study Skills	Laboratories



World Top 200 Universities

INTERNATIONAL FOUNDATION YEAR

Our World Top 200 Universities Pathway provides Business and Management modules for students aiming for top-ranked universities worldwide. This is an intensive qualification designed to support students' academic development and progression.

Featuring additional hours of tuition and support programme, you will receive expert advice in critical thinking, essay writing and advanced language usage. You will also have access to university taster days and enhanced university application support.

Subject to successful completion of the International Foundation Year, attending all required classes, all support tutorials, and following all application advice. If a student fails to gain entry to a QS2023 Global Top 200 university, we will contribute a £3000 scholarship to their progression on to another NCUK university.

Course features:

- Additional class time, self study periods and support
- Small average class sizes
- University application support to reach a global top 200 university QS2023
- 90% of NCUK students get into their first choice University
- 80% of NCUK students get a first- or second-class degree
- £3,000 scholarship to any student failing to gain entry to a QS2023 Global Top 200 university*

Progression options:

The World Top 200 Universities International Foundation route gives you access to multiple degrees at our universities. Here are a few popular courses that our students can progress to:

Accounting and Finance

Business Analytics

Business Management

Marketing

Economics and Business Finance

Digital Business

International Business Management

Human Resource Management

Where can you go?

Successful completion of this qualification will allow you to progress to leading NCUK Universities. The below top 200 universities are all possible progression opportunities.

NCUK University	QS2023 Rank	Country
The University of Manchester	8	UK
University of New South Wales	45	Australia
University of Bristol	61	UK
University of Leeds	86	UK
The University of Auckland	87	New Zealand
The University of Western Australia	90	Australia
University of Birmingham	91	UK
Durham University	92	UK
The University of Sheffield	96	UK
University of Alberta	110	Canada
Queen Mary University of London	125	UK
Lancaster University	146	UK
University of Exeter	163	UK
Cardiff University	166	UK
RMIT University	190	Australia
The University of Newcastle, Australia	192	Australia

KEY INFO

Start Date: September 2023

Tuition Fees: £18,850

Modules: Business Studies
Economics
Mathematics for Business
English for Academic Purposes (EAP)

Minimum Age Requirement: 17 years old.

Entry Requirements: Please see the full list of country entry requirements on our website.

*Terms and conditions:

If a student fails to gain entry to a QS2023 Global Top 200 university, we will contribute a £3000 scholarship to their progression on to another NCUK university. To claim this students must have an attendance rate of least 90%, and have followed all Malvern International university application advice.

Applicants who pass the course are eligible for the NCUK Guarantee – www.ncuk.ac.uk/guarantee/

Sample Timetable	Monday	Tuesday	Wednesday	Thursday	Friday
Period 1	Business Studies	Maths	Personal Tutorial	Maths	Economics
Period 2	Business Studies	Maths/Global Studies	EAP	Maths	Economics
Period 3	Maths	Business Studies	EAP	Economics	Maths
	LUNCH	LUNCH	LUNCH	LUNCH	LUNCH
Period 4	EAP	Business Studies	Economics	Economics	Business Studies
Period 5	EAP	EAP	Economics	EAP	EAP
Period 6	Study Skills	Study Skills	Study Skills	Study Skills	EAP
Period 7	Critical Thinking	Essay Writing	Advanced Language Skills	Top 200 University research/preparation	Self study
Period 8	Self study	Self study	Self study	Self study	Self study

University Progression Grade Requirements

For an idea of some of the most popular degree progressions and what grades you will require from your International Foundation Year to progress, please see the table below.

For a complete list and up-to-date list of course progressions, please visit:

www.ncuk.ac.uk/ncuk-qualifications/ncuk-entry-directory/

The following table is a tiny sample of more than 1000 progression degrees available at NCUK Universities. In addition to those that can be found on the link above, the NCUK International Foundation has been accepted for entry by over 45+ leading universities worldwide.

University	Course	IFY Stream	EAP grade requirement	Grade requirement for progression	Additional academic requirements
The University of Birmingham	BSc (Hons) Accounting and Finance	Business IFY	B	AAB	GCSE equivalent Mathematics at grade B
The University of Birmingham	BSc (Hons) Artificial Intelligence and Computer Science	Engineering IFY	C	AAA	Mathematics required
The University of Birmingham	BSc (Hons) Biomedical Science	Science IFY	B	AAB	Two sciences from Biology, Chemistry, Mathematics, or Physics; GCSE equivalent grade B in Mathematics, Biology and Chemistry (or double award science) if not offered at a higher level
The University of Birmingham	BSc (Hons) Business Management with Marketing	Business IFY	B	AAB	GCSE equivalent Mathematics and English at grade B
The University of Birmingham	BEng Electronic and Electrical Engineering	Engineering IFY	C	AAB	A level Mathematics or equivalent required. Maths (business) acceptable
The University of Bristol	BSc (Hons) Biochemistry	Science IFY	B	AAA	AAA including Chemistry and another core science/mathematics subject or A*AB including A in Chemistry and B in another core science/mathematics subject
The University of Bristol	BSc (Hons) Business and Management	Humanities IFY, Business IFY, Science IFY	B	AAA	AAA or A*AB. B in GCSE Mathematics (or equivalent)
The University of Bristol	BSc (Hons) Cancer Biology and Immunology	Science IFY	B	AAB	AAB including Chemistry and another core science/mathematics subject
The University of Bristol	BSc (Hons) Data Science	Engineering IFY	B	A*AA	A*AA including A* in Mathematics and A in Further Maths or another mathematics-related subject
Brunel University	BSc (Hons) Business Computing	Business IFY, Engineering IFY, Science IFY	B	BBB	Equivalent of Mathematics grade B or grade 5 and GCSE English Language grade C or grade 4. Including grade B in Maths and grade B in one of the following subjects: Physics, Chemistry, Biology, Computer Science, Electronics or Design and Technology
Brunel University	BEng (Hons) Civil Engineering	Business IFY, Engineering IFY, Science IFY	C	BBB	Computer Science, Electronics or Design and Technology
Brunel University	BSc (Hons) Computer Science (Artificial Intelligence)	Engineering IFY, Science IFY	B	BBB	Equivalent of Mathematics grade B or grade 5 and GCSE English Language grade C or grade 4
Brunel University	BEng (Hons) Electronic and Electrical Engineering	Engineering IFY, Science IFY	C	BBB	Equivalent of grade C or grade 4 in English Language and Maths
Brunel University	BSc (Hons) Accountancy	IFY Business, IFY Humanities	B	BBB	GCSE Mathematics (or equivalent) grade B
Brunel University	BSc (Hons) Business and Management	IFY Business, IFY Humanities	B	BBB	GCSE Mathematics (or equivalent) grade B and GCSE English (or equivalent) grade C
Brunel University	BSc (Hons) Economics	IFY Business, IFY Humanities	B	BBB	GCSE Mathematics (or equivalent) grade B and GCSE English (or equivalent) grade C
Brunel University	BSc (Hons) Finance and Accounting	IFY Business, IFY Humanities	B	BBB	GCSE Mathematics (or equivalent) grade B and GCSE English (or equivalent) grade C
Brunel University	BSc (Hons) Marketing Management	IFY Business, IFY Humanities	B	BBB	GCSE Mathematics (or equivalent) grade B and GCSE English (or equivalent) grade C
University of Exeter	BSc (Hons) Accounting and Finance	IFY Business, IFY Humanities	B	AAA	GCSE Mathematics (or equivalent) grade B and GCSE English (or equivalent) grade C
University of Exeter	BA (Hons) Business and Management	IFY Business, IFY Humanities	B	AAA including IFY Maths	GCSE English (or equivalent) grade B

University	Course	IFY Stream	EAP grade requirement	Grade requirement for progression	Additional academic requirements
University of Kent	BSc (Hons) Biomedical Science	Science IFY	B	BBC	Including B in Biology; GCSE Maths grade C
University of Kent	BSc (Hons) Computer Science	Business IFY, Engineering IFY, Science IFY	B	AAB-BBC	GCSE Maths grade C
The University of Manchester	BSc (Hons) Management	IFY Business, IFY Humanities	A	AAA including IFY Maths	-
The University of Manchester	BSc (Hons) International Business Finance and Economics	IFY Business, IFY Humanities	A	AAA including IFY Maths	-
The University of Manchester	BSc (Hons) International Management	IFY Business, IFY Humanities	A	AAA including IFY Maths	-
The University of Manchester	BSc (Hons) Biomedical Sciences	Science IFY	B	AAB	AA (Chem, Biol) B
The University of Manchester	MEng (Hons) Mechanical Engineering	Engineering IFY	B	AAA	Including Mathematics and Physics. We will consider Further Maths in lieu of Physics
Manchester Metropolitan University	BSc (Hons) Biomedical Science	Science IFY	C	96 UCAS Points	Grade C in biology or human biology. Other Science subjects may be considered. Grade C in High School Maths required
Manchester Metropolitan University	BA (Hons) Business Management	Humanities IFY, Business IFY	C	96 UCAS Points	Grade C in High School Maths required
Manchester Metropolitan University	BSc (Hons) Computer Science	Engineering IFY, Science IFY	C	96 UCAS Points	Further requirements: GCSE Maths C/4 (or local equivalent); IFY Maths or Science C
Queen Mary University of London	BSc (Hons) Accounting and Management	IFY Business, IFY Humanities	B	AAA	-
Queen Mary University of London	BSc (Hons) Business Management	IFY Business, IFY Humanities	A	AAA	-
Queen Mary University of London	BA (Hons) Comparative Literature and Film Studies	IFY Business, IFY Humanities	A	ABB	-
Queen Mary University of London	BScEcon (Hons) Economics and Finance	IFY Business, IFY Humanities	B	AAA	-
Queen Mary University of London	BScEcon (Hons) Economics and International Finance	IFY Business, IFY Humanities	B	AAA	-
Queen Mary University of London	BA (Hons) International Relations	IFY Business, IFY Humanities	A	ABB	-
Queen Mary University of London	BEng (Hons) Biomedical Engineering	Engineering IFY, Science IFY	C	AAB	A level Mathematics, and either Physics or Chemistry
The University of Sheffield	MEng (Hons) Chemical Engineering	Engineering IFY, Science IFY	C	AAA	Including Maths (any syllabus) and either Chemistry, Physics or Biology
The University of Sheffield	BEng (Hons) Civil Engineering	Engineering IFY	B	AAA	Including Maths (Engineering syllabus)
The University of Sheffield	BEng (Hons) Mechanical Engineering	Engineering IFY	B	AAA	Including Maths (Engineering syllabus) and either Physics or Chemistry
The University of Sheffield	BEng (Hons) Software Engineering	Business IFY, Engineering IFY, Science IFY	B	AAA	Including Maths (any syllabus)



"I was shown all the university options, and I was guided and supported in terms of how to go about the entire application process. I received two offers and I'm now studying Law LLB at the University of Leeds."

BAARIQ, TRINIDAD & TOBAGO – INTERNATIONAL FOUNDATION

HOW TO APPLY

To place an application:

1. Visit our website
www.malvernhouse.com/ncuk/
2. Click **Apply Now**.
3. Fill out the Online Application Form.
4. Our team will contact you to submit your supporting documents.

What documents will you be asked to provide?

- A copy of your passport
- A copy of your academic transcript and certificate
- Proof of your English language level (UKVI IELTS or Academic IELTS)
- A Personal Statement

If you do not have all these documents ready, it isn't a problem, you have time to complete this.

Should you have any questions, you can always email us at pathways@malvernplc.com

Section: Student Details

Title (Mr/Mrs/Ms)	Family name	Other names
Gender (M/F)	Date of birth DD/MM/YYYY	

Do you intend to apply for a Student Visa?

Name as written on passport	Passport Number
Do you have or are you applying for permanent residence in the UK?	YES NO
Do you have dual nationality status?	YES NO

Permanent country of residence

Student's home address (this must be completed accurately as it may affect your visa application)

Postcode	City	Country
----------	------	---------

Students telephone numbers in country of residence (including international code)

Telephone number	Mobile telephone number
Student's email address	

Are you using an Education counsellor? Y/N

Which Education Consultancy are you using?	YES	NO
Counsellor name:		
Counsellor's email:		

Section: Parents/Sponsor/Family Member Details

Title (Mr/Mrs/Ms)	Family name	Other names
Gender (M/F)	Date of birth DD/MM/YYYY	
Relationship to student		
Contact address		
Postcode	City	Country
Telephone (including international code)		
Email address		

How do you intend to fund your studies? (Self/Family/Employer/Sponsor)

Name of employer/sponsor

Section: Course Selection

International Foundation	Business Management	Accounting and Finance	Humanities and Social Sciences
	Engineering	Science	World Top 200 Universities IFY in Business & Management

Please specify start date

September 2022 (3 Term)	January 2023 (3 Term)	September 2023 (3 Term)
-------------------------	-----------------------	-------------------------

Proposed undergraduate programme (Needs to be completed to enable us to process your application)

Please provide the name of the degree programme you intend to progress to following your International Foundation Year:

Section: Student's Education History

Please give full details of your current or most recent school, college or university. For visa purposes we must have a full history of your academic background. Please ensure any gaps in your education are fully explained either on the application form or enclosed with your supporting documentation. All official institution transcripts, latest available results or forecast results must be submitted in English.

I confirm that I have included full details of all of my academic studies and do not have any plans to study further prior to enrolling on my programme with Malvern International. I understand that failure to provide full information on my academic studies may result in a visa refusal and/or dismissal from the International Study Centre.

Institution name		
Dates of Study from DD/MM/YYYY to DD/MM/YYYY		
Date you received (or will receive) your certificate DD/MM/YYYY		
Highest educational qualification name		
Language of instruction		
Institution Address		
Postcode	City	Country
Email address		

Have you ever studied in the UK?	YES	NO
If yes, please provide full details of study duration. Please also include a copy of your previous visa (must be completed for visa purposes).		
From DD/MM/YYYY	to DD/MM/YYYY	
Have you ever been refused a visa for the UK?	YES	NO
Have you ever been refused a visa application to any country?	YES	NO
If yes, please provide full details		

Section: Current English Language Proficiency

Please tick and enter details of your most recent English language test.

UKVI IELTS Other (please specify)

Have you arranged to take a UKVI IELTS test before starting your International Foundation Year?

YES NO

If yes, please provide full details

Section: Welfare

Do you have any conditions, medical or otherwise that may impact on your time in the UK? YES NO

Do you consider yourself to have a disability? YES NO

Have you been convicted of a relevant criminal offence? YES NO

If you have answered yes to any of the above, please provide full details with your application on a separate sheet.

Section: Accommodation Options

Do you require accommodation? YES NO

Please select accommodation type required:

Halls of residence Homestay

Do you envisage that you will have any specific requirements in student accommodation as a result of a disability/medical condition? YES NO

Section: Airport Pickup

Do you require an airport pickup? YES NO

Section: Parent or Guardian Communications

I confirm that my parent and/or guardian has given their permission to be contacted about our products and services which may be of interest to them. YES NO

Section: Declaration

I declare that the information I have supplied on this form is complete and correct.

I have read, understood and agree to abide by the Terms and conditions of Malvern International (Malvern House London).

I agree to abide by the Cancellation and Refund Policy as detailed within our Terms and Conditions.

I agree to pay all tuition and accommodation and sundry expense fees as they become due.

I understand that giving false or incomplete information may lead the refusal of my application or cancellation of my enrolment.

I agree that copies of my academic progress and performance reports can be supplied to parents, sponsors or education counsellors without further notification. YES NO

I agree that my records and achievements may be used for promotional purposes without further notification.

YES NO

Your application will be processed by Malvern International. In submitting this application, you explicitly agree that your personal data (including personal data) can be processed in accordance Malvern International's Privacy Policy.

Signed _____ Date DD/MM/YYYY

(Parent/guardian) for students under 18 years of age.

Or

Signed _____ Date DD/MM/YYYY

Students over 18 years of age.

Once completed:

Please return this form to pathways@malvernplc.com.

Should you have any questions, please do not hesitate to contact by email or on our chat function on our website

www.malvernhouse.com/ncuk/.

Next Steps:

Once your application has been placed, you will be requested to submit all supporting documents.

We will assess your application with a view of making you an offer (providing you meet the requirements).

Once you have received your offer, you can confirm your offer, submit any outstanding documents, and make your deposit payments.

Email address:
pathways@malvernplc.com

Web Address:
www.malverninternational.com

All programmes are offered by Malvern International PLC.

This publication is for general guidance of students considering studying with Malvern International in 2023/24. Malvern International reserves the right to make variations to the contents and methods of delivery of the programmes and services we offer, and to discontinue programmes as deemed required. Malvern International reserves the right to combine or merge programmes where required to do so. All information is correct at the time of going to press and all programmes described within this publication are those that Malvern International are planning to offer. Malvern International reserves the right to amend, add or remove any programme and/or services set out in this brochure and/or the timetable, delivery, content syllabus and assessment of our programmes.

All applications placed to Malvern International are subject to the terms and condition located on the following link:

<https://malvernhouse.com/our-policies/>

